

BROOKLAND JUNIOR SCHOOL



‘Kind, Respectful, Best’

Year 6 Meet the teacher



Welcome to Year 6



- Thank you very much for attending
- We are all really looking forward to working in partnership with you and teaching our wonderful Year 6 children.
- This presentation will give you some key information about Year 6.



Meet the Year 6 Team



Mrs Aristidou
Hawthorn class teacher



Mrs Gorton
Hawthorn class teacher



Miss Harrison
Sycamore class teacher



Miss Church
Spruce class teacher



Mr Pugh
Spruce class teacher



Mrs Clark
Teaching Assistant



Mrs Curry
Teaching Assistant



Mr Wyatt
Teaching Assistant



Miss Siviglia
LSA



The Brookland Values



Be KIND

Be RESPECTFUL

Be the BEST that you can be



Rights Respecting school



- Each class has a Class Agreement based on the Unicef Rights of the Child.
- The class chooses the rights to focus on such as the right to an education, the right to be safe, the right to relax and play.
- We have a weekly session where children learn more about the rights and how they can help everyone to receive their rights.



We are INCLUSIVE and DIVERSE



The children are at the centre of everything we do

We treat each child as an individual

We acknowledge diversity because we are diverse

We are working on ensuring our curriculum continues to be diverse

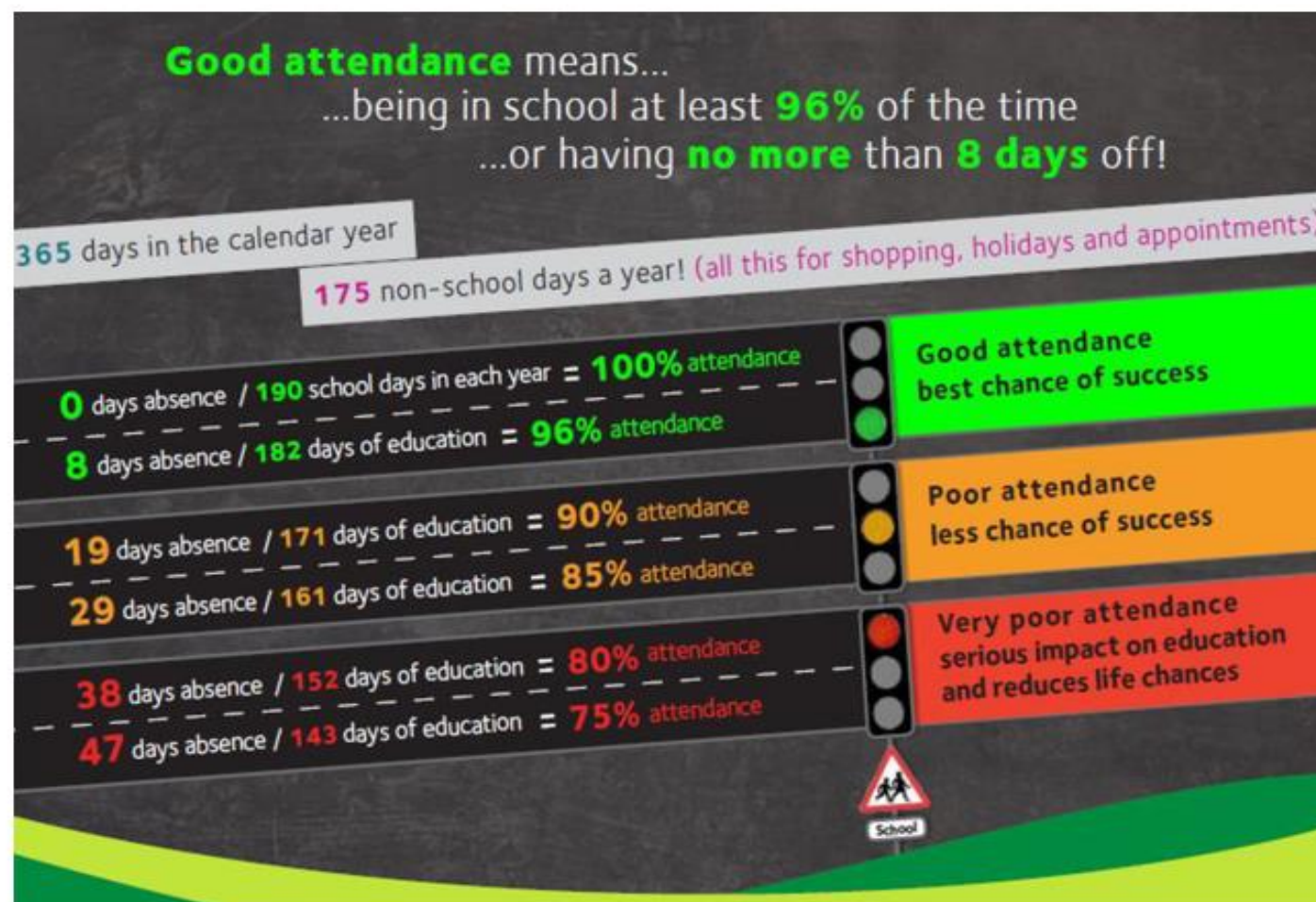
We will be using aspects from the 'No Outsiders: Everyone different, everyone welcome' scheme which uses children's literature and real-life news stories to discuss differences and acceptance.



ATTENDANCE MATTERS



- We can not stress enough how important it is that your child attends school everyday
- We know children get ill, but unless they are really poorly please send them in. Please do not keep them at home for a runny nose, a slight cough etc.
- Speak to the office and depending on the circumstances, we are happy to administer calpol or nurofen if needed
- Term time holidays will not be authorized
- Attendance Policy has further details





Uniform

- We have very high expectations and this starts with uniform
- Please ensure your child comes to school in correct school uniform and PE uniform
- Uniform lists have been previously emailed out and are available on our school website
- No jewelry – except stud earrings, a watch (not SMART), and any jewelry worn for religious reasons – NO bracelets, bangles, rings, nail polish, make up etc. Dark coloured school shoes to be worn on non-PE days
- PE uniform – NO football kits, hoodies or bright trainers. Children can wear their school jumper over their PE uniform.



Equipment

- School bag
- Water bottle – named - only water
- Stationery – we provide everything your child needs but they are welcome to bring in their own stationery – but no big ‘smiggle’ type pencil cases please
- No toys/cards to school.
- Year 6 children should not bring in a mobile phone, unless they walk home alone



Curriculum



- We teach a broad and balanced curriculum covering all areas of the National Curriculum.
- In Year 6, we teach 6 maths lessons a week and 9 English lessons over 2 weeks. Guided Reading is taught 4 times a week. Spelling and handwriting are taught separately.
- There are 2 PE lessons a week – Monday and Wednesday
- Your child will also have weekly lessons in Science, RE, PSHE, Music, Computing, History/Geography, Spanish, Art/DT
- Your child may have ‘intervention’ sessions to help them catch up or to give extra support. These are small group or individual sessions, which usually take place in the afternoon.



What the school day looks like



Week A : Timetable – Year 6- Hawthorn

	8:45 – 9:00	9:00 – 9:20	9:20 – 10:20	10:20 – 10:40	10:40 – 11:45	11:45 – 12:15	12:15 – 1:15	1:15 – 2:30	2:30 – 3:00	3:00 – 3:10
Monday	Registration/Early Morning Work/Feedback	Celebration Assembly	Computing	Break	Geography	Spanish	Lunch	PE	Arithmetic	Class Novel
Tuesday		Singing	Maths		English/Spog	Arithmetic		PSHE	Guided Reading	Class Novel
Wednesday		Guided Reading	Maths		English	PE		Art	In Class	Class Novel
Thursday		Phase Assembly	Maths		English/Spog	Arithmetic		Science	Guided Reading	Class Novel
Friday		Guided Reading	Maths		English/Spog	Music		R.E.	Arithmetic	Assembly

Curriculum Map - Year 6 Wider Curriculum

Half termly, you will receive a curriculum newsletter.

Subject	Autumn 1	Autumn 2	Spring 1	Spring 2	Summer 1	Summer 2
Science	Evolution	Light	Living things and their habitats	Animals including humans	Electricity	
History		Victorians		World War II	Migration	
Geography	Raging Rivers		Amazing Americas			Trade and Economics
Computing	Purple Mash Coding Online/Digital Safety	Purple Mash Spreadsheets	Purple Mash Blogging	Purple Mash Text Adventures	Purple Mash Networks	Purple Mash Quizzing Binary
Art	Jean Baptiste Carot - Hyperrealism		Kinetic Sculpture		Mary Charles	
Music	Charanga Unit 1 Happy	Charanga Unit 2 Classroom Jazz	Charanga Unit 3 You've got a friend	World War II Music	Charanga Unit 5 Music & Me	Charanga Unit 6 Reflect, rewind, replay
DT		Victorian moving toy		Textiles		Food Tech Building on previous units create Italian dishes including tiramisu
RE	Buddhism Significance of wheel and lotus flower	Christianity Was Jesus the Messiah? (Salvation)	Buddhism- meditation and mindfulness	Christianity Resurrection	Humanism-comparison across three religions/views	Christianity Context for ultimate questions
PSHE+C/ UNCIEF	Relationships: Friendships and Kindness BAME/Black history Month - OCTOBER	Relationships: Respect and bullying Managing change	Relationships: Staying Safe Media literacy	Living in the Wider World Economic wellbeing	Mental Health and Emotional Wellbeing.	Living in the Wider World: Personal identity Health and hygiene RSE FGM
PE	Tag Rugby Netball/Gymnastics	Fitness Dance/Handball	OAA Hockey/Badminton	Basketball	Athletics Tennis	Football Rounders/ Cricket
Potential Trips	Lee Valley Rivers				PGL	End of Year treat (Dragons Den)

We are always evolving our curriculum, so there may be some changes to the above but we will communicate this in the half termly newsletters



Work in books - Marking and presentation



- Teachers will highlight in pink to show that your child has met the learning objective.
- Teachers will give personalised verbal feedback to the children during lessons.
- Teachers will use green pen to show children where they need to correct spellings or punctuation.
- Teachers will give 'next steps' in green pen, for children to respond to in purple pen.
- Children use purple pen to edit their own work.
- Children will be taught to write in blue handwriting pen in a cursive style.
- Neat presentation is taught and expected in all written work.



Lunchtime



- Lunchtime is 1 hour long
- All lunches are selected on school grid
- Nut free school
- Healthy packed lunch is encouraged (No sweets, fizzy drinks and nut free)
- We will have a range of activities at lunch time: social club, film club, origami, dungeons and dragons, various sports clubs, small playground
- Children need a snack for break time - fruit or vegetables only
- Milk can be ordered and paid for online – speak to the office



End of day



- All classes keep a list of adults whom you have authorised to collect your child – if this needs updated, please email the office
- We will not let a child go with anyone who is not on the list, unless you have notified the office
- If you authorise your child to be a 'walker' they will be released from the classroom door to meet you at the area you have decided with them



Whole School Positive Behaviour System



- 4 houses: Amber, Emerald, Ruby and Sapphire
- Children who show the Brookland Values (kind, respectful, best) will be recognized with a house point
- House points are counted each week and then collated to find the winning team for the term.
- Weekly Headteacher's Award for: Being Kind, Being Respectful/Rights Respecting, Being the Best that you can be and the Risk Taker Award



Behaviour Ladder



Levels of behaviour	Examples of anti-social behaviours	Protected/Educational Consequences	
		In Classroom	Outside of the classroom
Level 1 (Low level anti-social behaviours)	<ul style="list-style-type: none">• Calling out / talking over others• Disruption to others• Time delaying• Unwillingness to remain on task• Reluctance to follow instructions which are given to stop level 1 behaviours (refusal/defiance)• Non-compliance with general class expectations e.g. not lining up in a line, swinging on a chair• Using school resources and equipment incorrectly	<p>Step 1: Non-verbal warning- look or gesture followed by "Thank you."</p> <p>Step 2: Polite reminder (Verbal warning): "[Name] Listen, thank you."</p> <p>Step 3: Child offered a choice to work in an alternative place within the classroom. Self-regulation time if needed</p> <p>Relevant intervention and support offered including a restorative debrief with Class Teacher or TA.</p> <p>Step 4: Child moves to a space inside (LKS2) and outside (UKS2) a neighboring classroom (within year group) for 10 minutes with their learning (timer used).</p>	<p>Step 1: Non-verbal warning- look or gesture followed by "Thank you."</p> <p>Step 2: Polite reminder (Verbal warning): "[Name] Listen, thank you."</p> <p>Step 3: Child offered a choice to play somewhere else on the playground. Self-regulation time if needed</p> <p>Relevant intervention and support offered including a restorative debrief with member of staff on duty.</p> <p>Step 4: Child sent to year group lead for 10 minutes (timer used).</p>



Behaviour Ladder



Level 2	<ul style="list-style-type: none">Continuation of level 1 anti-social behaviours after level 1 consequences <p>Or a single incident of:</p> <ul style="list-style-type: none">Physically or emotionally hurting another deliberately (a single occurrence)Verbal or physical retaliationName callingNot speaking respectfully to peers/adults e.g. answering back and not following instructions e.g. to leave the classroomDeliberate damage to school or personal propertyThrowing objects around a classroomVerbally threateningNot using outdoor equipment properly and safely e.g. flipping on the trim trailPlay fightingInappropriate behaviours in the dining hall, e.g. throwing food, touching others food or using cutlery in an inappropriate manner <p>Physically can be defined as but is not restricted to the following: Punching, elbowing, kicking, slapping, head-butting, kneeling, grabbing and pulling – anything which involves touching another person</p>	<p>Step 5: Internal exclusion - Child moves to a space outside of the classroom of SLT in the neighboring year group for remainder of the session.</p> <p>Step 6: Internal exclusion - Child moves to space outside of the classroom of SLT in neighboring year group for the remainder of the half day/full day.</p> <p>Meeting with parent and child to decide on course of action (Class teacher and SLT up to Step 6)</p> <p>For persistent Level 2 behaviours, complete STEPS paperwork (early prognosis and roots and fruits) with behaviour lead or SENCo</p>	<p>Step 5: Internal Exclusion - Continued level or 2 behaviour child to miss the rest of that break or lunch.</p> <p>Step 6: Internal Exclusion - Child misses that and the next session of break or lunch.</p> <p>Depending on incident, internal exclusion may result in missing class time (e.g. inappropriate language)</p> <p>Meeting with parent and child to decide on course of action (Class teacher and SLT up to Step 6)</p> <p>For persistent Level 2 behaviours, complete STEPS paperwork (early prognosis and roots and fruits) with behaviour lead or SENCo</p>
----------------	--	--	--



Behaviour Ladder



Level 3

- Inappropriate language - swearing and persistent rudeness
- Defiance towards any adult when they are giving instruction e.g. walking away, inappropriate language being used or putting yourself or others in an unsafe situation
- Absconding from the school building and/or premises
- Putting yourself or others in a dangerous situation
- Use of racist/sexist/homophobic/transphobic/discriminatory language
- Sexualised behaviour, including language, words and physical actions
- Serious physical/emotional harm
- Use of social media to send inappropriate language, messages or media on the school's site.
- Any use of phone on school site
- Continuous breach of level 1 or level 2 anti-social behaviours despite staff/ intervention and support
- Deliberate serious damage to school or personal property
- Bringing in, physically threatening or using a weapon

- Where any consequences from level 2 have not had an impact over time or for an isolated serious incident, the following procedures should be followed:
- Internal Exclusion- Persistent level 2 behaviours demonstrated will result in internal exclusion for up to 5 school days
- Fixed Term External Exclusion- Between 1-3 days at the discretion of the Headteacher for repeated level 2 behaviours and Level 3 behaviour. Exclusions beyond 3 days will be based on continuing threat to the safety of the child or others
- Permanent Exclusion



SATs



- Your children will be sitting their SATs in May 2024, week beginning 13th May 2024
- SPAG – spelling, punctuation and grammar
- Reading test
- Maths – arithmetic and reasoning paper (x2)
- Mock SATs
- CGP Books – we are currently looking at which ones are the best revision books for the children – we will be emailing you very soon with which revision books should be purchased. We highly recommend them.



Home Learning



- Weekly home learning will be emailed home every Friday, along with Mrs Barton's weekly newsletter.
- **Reading** – weekly (**at least three times a week**) - A minimum of 20 minutes per reading day to build up stamina. We know by Year 6, many children will want to read to themselves, so it is absolutely fine for them to sign the reading records themselves. Of course if you do read with your child, then you can sign your reading record as well.
- *Note – On the inside cover of reading records will be the log in details for purple mash, Times tables rockstars and good classroom. The children may need these details for some of the home learning that is set.*
- **SPaG** – we set home learning around the spelling, grammar and punctuation we are teaching and/or around Year 5/6 common misconception words
- **Maths** - Until the CGP books are up and running, we will set general maths home learning. Children continue to learn times tables on times table rockstars.
- **Termly** – homework menu which links to the foundation subjects - Children will be given a range of homework activities from which they can choose which tasks to complete. Children are accepted to complete a minimum of 2 tasks but can complete as many as they like



Home Learning Menu



Brookland Junior School

Year 6 – Home Learning Menu



Art/DT

1. Print out or find a picture in a magazine. Cut in half. Glue onto a sheet of paper and draw the other half of the picture to complete it.

Wellbeing

1. <https://www.youtube.com/watch?v=WayZk9WvX9Q>
Complete these mindful activity exercises.
2. Design and make a smoothie. Give it a rating out of 5. Would you make it again? Why/ why not?

Music

1. Listen to some relaxing/calming music whilst doing your home learning.
<https://www.youtube.com/watch?v=17QVd3ovdow>
2. Research other songs written by **Sheryl Williams** (other than Happy).
3. Write your own verse lyrics for a song of your choice.

Spanish

2. <https://www.bbc.co.uk/bitesize/topics/es72nb/articles/es88q7h> Try this fun game.



PE

1. Complete this fitness video
<https://www.youtube.com/watch?v=1-8-HyHZyFI>
And
<https://www.youtube.com/watch?v=6wpl18cl6ZA>
2. Design a home fitness workout with things around the home. What could you use?

Science

1. Research your favourite animal and consider how it has adapted to survive in its environment over time.
2. Think about you and your own family, which features do you think you have inherited and from whom? Present your work as creatively as you wish!

History/Geography

1. Geography: Create a word search using key vocabulary for the features of a river i.e. source, tributaries, mouth etc.
2. Geography: <https://www.furkidelive.com/learn/10-facts/10-facts-about-rivers/> Find and write some facts about rivers.
3. Research a river of your choice and create a fact file on your findings.

PSHE/OUR RIGHTS

1. Choose a Rights Respecting article and create a poster about it.
2. Think of 5 kind acts that you could do for someone else during the month and write them down. Once you have completed them ask the person you helped how your kindness helped them.
3. Choose a person to research for Black History Month and create a fact file about them.

RE

1. Buddhism: <https://www.youtube.com/watch?v=PhJ-fobJcbs> Make some origami Lotus flowers.
2. Buddhism-Research some interesting facts about Buddhism or the Buddha.
<https://www.teachmean.com/teachmean/help/buddhism>



Clubs and extra-curricular activities



- Children have access to range of clubs
- Many are at lunchtimes
- After school: choir, range of sports (tennis, football, multi-sports, athletics, tag rugby), musical theatre
- We will be sending out information about clubs this week – you can sign your child up via Arbor.



Medical



- Head bumps
 - letter sent home with symptoms to look out for
 - text sent home to inform you
 - Coloured wrist band put on child
- Medication
 - Please let the office know of any changes
 - We will call you when medication is coming up to its expiry date so you can replace it



Communication at Brookland



Class email – for general classroom enquiries – teachers will aim to reply within 48 hours – please note that teachers do not look at this email during the school day. Emails are mainly checked at the end of the day.

- hawthorn@brooklandjm.herts.sch.uk
- spruce@brooklandjm.herts.sch.uk
- sycamore@brooklandjm.herts.sch.uk

Admin email: admin@brooklandjm.herts.sch.uk - If you need to communicate change in collection, absence or something urgent then please use the school office email

Mrs Barton's Weekly Newsletter – usually emailed on a Friday – has upcoming dates, key events in the school, celebration information

Phone call or text message

School website – we are currently putting together our new website but our current website still has some useful information



Mobile Phones and Social Media



- The expectation around mobile phones is that they should be SWITCHED OFF once children are in the school grounds (after they have communicated with parents that they have arrived).
- Mobile phones are given back to children AT THE END OF THE DAY and are NOT allowed to be switched on until they leave the school grounds to avoid incidents of filming and irresponsible photos.
- The recommended age for WhatsApp, Instagram, Snapchat and TikTok etc is 13 years minimum.
- If you have given permission for your child to use such sites – please can you monitor the use of these sites. We are increasingly having incidents of bad language, photos/videos being shared without consent and just general unkindness online.
- As a school we are always here to support our children if something is said or written online outside of school, but as we are sure you can understand it is very difficult to deal with things that have not happened on our premises. We really do need parental support with dealing with online issues.
- Although something we hope you will not need to do, but if you do find any disturbing content online and on your child's phone, then you are well within your rights to go to the police.
- Children spend a lot of time in school learning about online safety and being kind and it would be really helpful if you could support us in reiterating the same messages at home.



Can you help?

Bagels

- If you are able to support with prepping bagels in the morning on any day of the week (from 8am until 8:45am) please could you let the office know.
- If you are able to help, Mrs Barton is happy to have your children in sunrise club (breakfast club) free of charge.
- Even if you can only do one day a week, it would really support us in getting the bagels prepared for the children – the children love the bagels.

PTFA

- We are looking at putting together a new PTFA. Further details will be coming out soon about a meeting for the PTFA.
- If you have the time, it would be great if you could join the PTFA so we can get it up and running – it really is an important part of our school community and a great way to get involved with the school.

Thank you very much for attending



‘Kind, Respectful, Best’