



'Kind, Respectful, Best'

Brookland Federation **Brookland Junior School**

Elm Drive, Hertfordshire, Cheshunt, EN8 0RX

Tel: 01992 624487

Email: admin@brooklandjm.herts.sch.uk

Website: www.brooklandjm.herts.sch.uk

Headteacher – Mrs M. Barton



Friday 21st March 2025

Term Dates until July 2026

Dear Parents & Carers,

Please find below term dates for the rest of this academic year and the academic Year 2025-2026.

Spring Term 2025

Monday 6 th January	INSET Day 3 – school closed
Tuesday 7 th January	Children back to school
Monday 17 th February – Friday 21 st February	HALF TERM
Monday 24 th February	Children back to school
Friday 4 th April	Last day of term – finish at 1:25pm

Summer Term 2025

Tuesday 22 nd April	Children back to school
Monday 5 th May	BANK HOLIDAY – school closed
Monday 26 th May – Friday 30 th May	HALF TERM
Monday 2 nd June	INSET Day 4 – school closed
Tuesday 3 rd June	Children back to school
Tuesday 22 nd July	Last day of term – finish at 1:25pm
Wednesday 23 rd July	INSET Day 5 – school closed

Autumn Term 2025

Wednesday 3rd September	INSET Day 1 – school closed
Thursday 4th September	Children back to school
Monday 27 th October – Friday 31 st October	HALF TERM
Monday 3rd November	Children back to school
Friday 19 th December	Last day of term – finish at 1:25pm

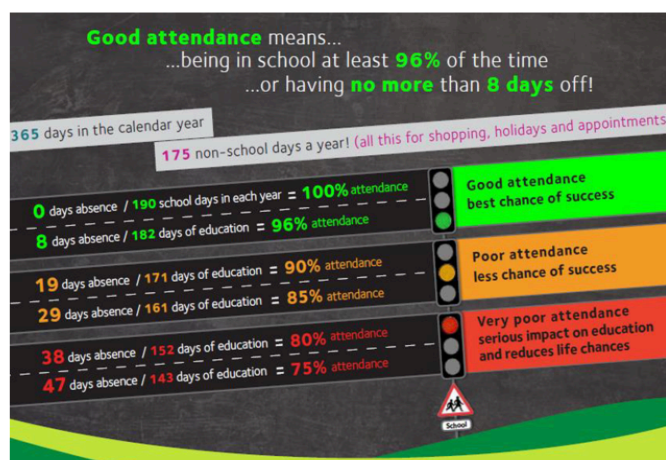
Spring Term 2026

Monday 5 th January	INSET Day 2 – school closed
Tuesday 6 th January	Children back to school
Monday 16 th February – Friday 20 th February	HALF TERM
Monday 23 rd February	Children back to school
Friday 27 th March	Last day of term – finish at 1:25pm

Summer Term 2026

Monday 13 th April	Children back to school
Friday 1 st May	OCCASIONAL DAY - school closed
Monday 4 th May	BANK HOLIDAY – school closed
Monday 25 th May – Friday 29 th May	HALF TERM
Monday 1 st June	INSET Day 3 – school closed
Tuesday 2 nd June	Children back to school
Tuesday 21 st July	Last day of term – finish at 1:25pm
Wednesday 22 nd July	INSET Day 4 – school closed
Thursday 23 rd July	INSET Day 5 – school closed

As per our attendance policy, please ensure any holidays are only booked during school holiday times only. It is very important that children attend school on the days that school is open. As you can see from the image to the right, even missing just a few days from school can have a significant impact on your child's success at school. If you have any questions or concerns around attendance, please do give Mrs Clancy a call in the first instance who is always happy to support. As a school we are always here to help and support in any way we can.



Kind regards,

M. Barton

Mrs M Barton
Headteacher