

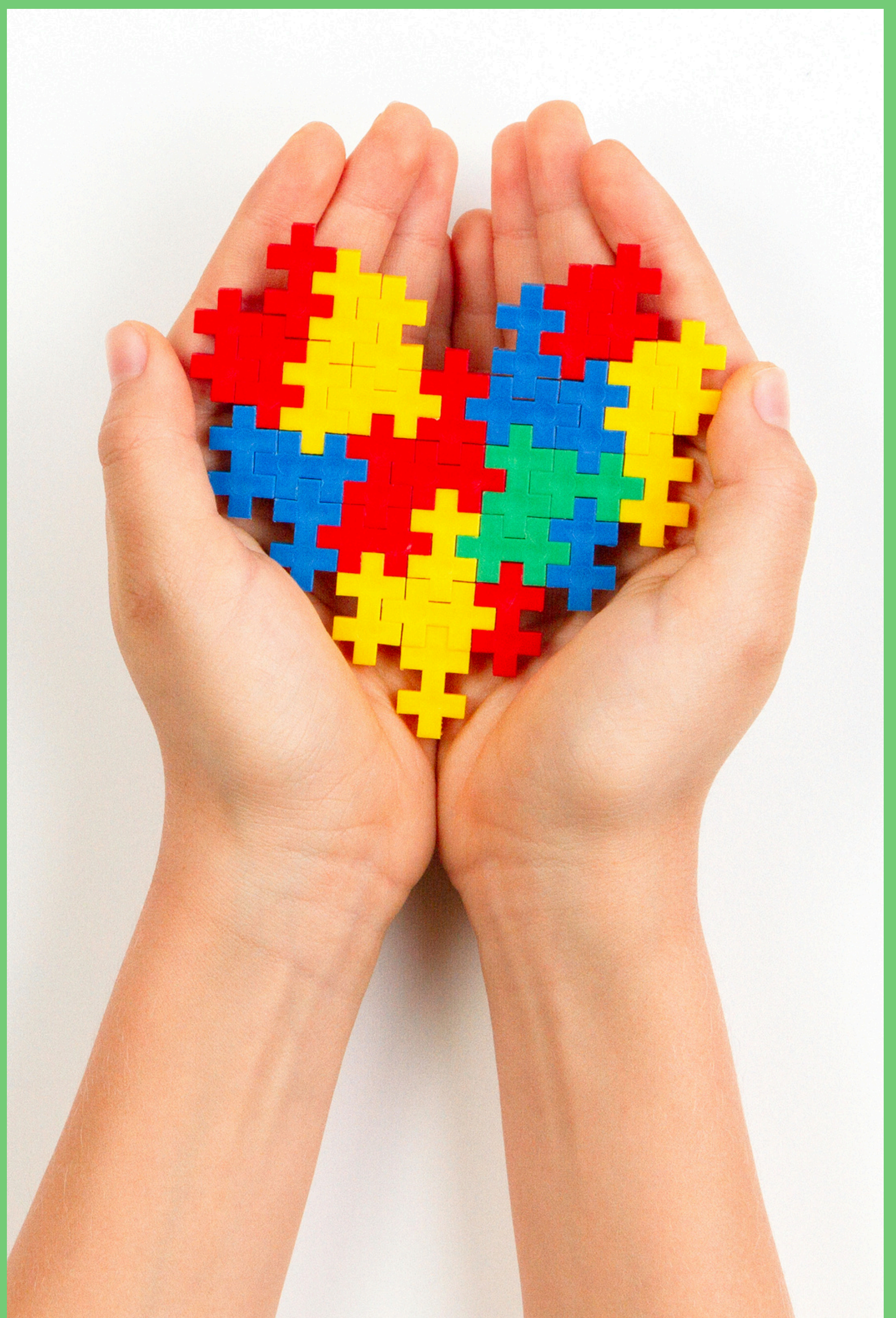
# Top Tips For Identifying the Early Signs of SEN in Your Child



Supporting families in the local community




Join us for a hands-on session designed to help you support your neurodiverse child. We'll provide practical advice and guidance on accessing local services and training courses. You'll also have the opportunity to connect with other parents / carers, share experiences, and gain a deeper understanding of neurodiversity. This is a great chance to learn, ask questions, and find the support you need on your journey.




 @chexsofficial

 @chexs

[WWW.CHEXS.CO.UK](http://WWW.CHEXS.CO.UK)

 @chexsofficial

 @chexsofficial